



Malheur National Forest

## Forest Service News Release

**Contact:** Amy Franklin (541) 620-3365

[SM.FS.malpubinfo@usda.gov](mailto:SM.FS.malpubinfo@usda.gov)

[www.fs.usda.gov/malheur](http://www.fs.usda.gov/malheur)

X: [@MalheurNF](https://twitter.com/MalheurNF)

Facebook: [www.facebook.com/MalheurNationalForest](https://www.facebook.com/MalheurNationalForest)

### Updated Area Closure for Falls Fire

**John Day and Hines, Ore. (July 13, 2024)** — The Malheur National Forest has issued an area closure for the Falls Fire on the Emigrant Creek Ranger District. To protect public health and safety, fire managers have closed the area around the fire due to fire activity and fire suppression operations. This updated closure will be effective July 13, 2024, through December 31, 2024, unless rescinded sooner.

#### Campground Closures:

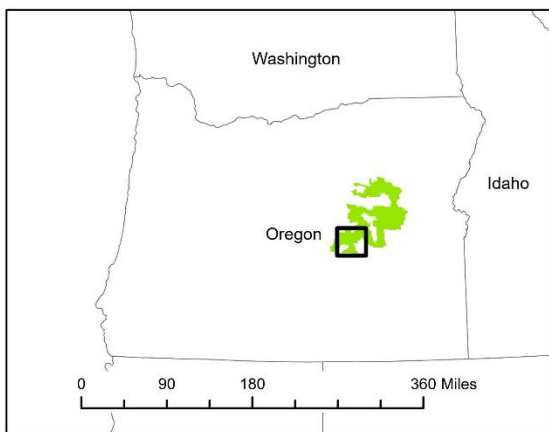
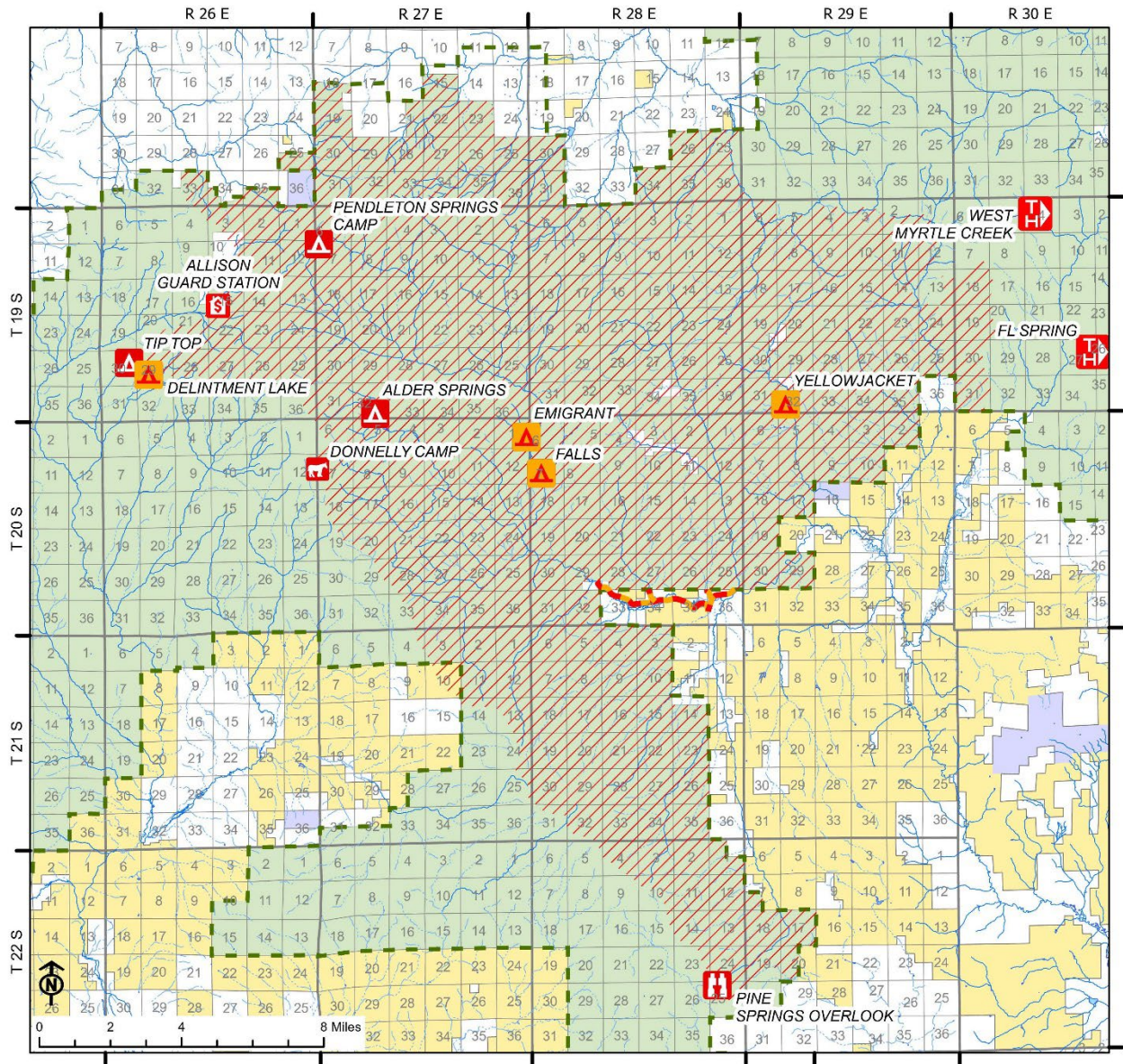
- Emigrant Creek Campground
- Falls Campground
- Yellowjacket Campground
- Delintment Lake Campground

#### Road Closures:

- Forest Service Road 43 - From the junction of FS Road-47 west to the National Forest Boundary.
- Forest Service Road 4310 – From the junction of FS Road -43 north to the National Forest Boundary.
- Forest Service Road 47 -From the junction of FS Road 43 – northeast to the National Forest Boundary.
- Forest Service Road 4770 – From the junction of FS Road 47 – north to the National Forest Boundary.

A detailed map of the closure is available on the Malheur National Forest website and offices.

For additional information about the Malheur National Forest, visit [www.fs.usda.gov/malheur](http://www.fs.usda.gov/malheur).



**Falls Fire Area Closure Order  
Exhibit A  
Closure Number 06-04-02-24-14  
Malheur National Forest**

- Legend
- Campground Closure
  - Campground
  - National Forest Land
  - Road Closure
  - Horse Camp
  - Bureau of Land Management
  - Area Closure
  - Lookout/Cabin
  - State Land
  - Observation Site
  - Other Land, Including Private
  - Trailhead



###